



# PHOENIX

## SPECIFICATIONS

### SUBI

### WALL BASIN MIXER SET



PRODUCT CODE: 10576020C  
 FINISH: CHROME  
 WELS: 5 STAR - 6 LT/MIN

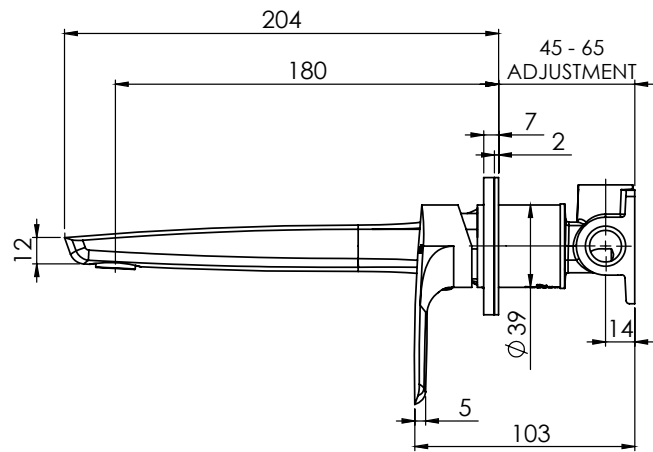
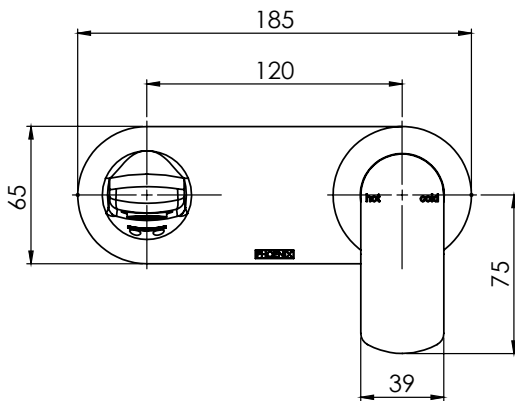
#### INFORMATION:

MATERIAL: BRASS  
 TEMPERATURE RATING: MIN 1° - MAX 75°  
 PRESSURE RATING: MIN 150 kPa - MAX 500 kPa

#### CONSUMER UNIT:

SIZE: L 235MM x W 245MM x H 72MM  
 GROSS WEIGHT: 2.2 KG  
 BARCODE EAN-13: 9320594 023 836

TO SEE THE COMPLETE SUBI COLLECTION VISIT  
[www.phoenixtapware.com.au](http://www.phoenixtapware.com.au)



PLEASE [CLICK HERE TO VIEW FULL WARRANTY](#)

While we aim to ensure the specifications shown are correct at time of printing, Phoenix Tapware reserves the right to make modifications without prior notice. Always use the physical product measurements for mark-ups and roughing-in as the line drawing shown may differ from the actual product over time. All measurements are shown in millimetres.

A Registered Design and Trademark of Phoenix Industries Pty. Ltd

[www.phoenixtapware.com.au](http://www.phoenixtapware.com.au)  
 03 9780 4200



# PHOENIX

## SPECIFICATIONS

### SUBI

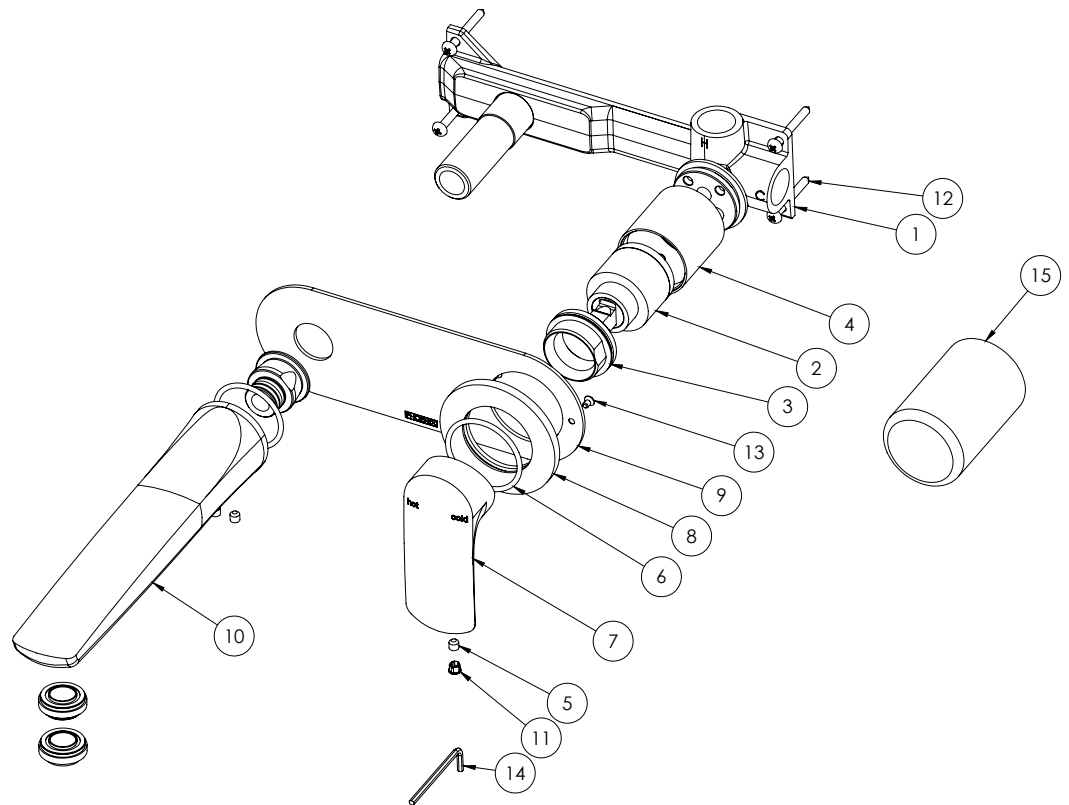
### WALL BASIN MIXER SET

PRODUCT CODE: I0576020C  
FINISH: CHROME  
WELS: 5 STAR - 6 LT/MIN



#### PARTS LIST

1. WALL BREACH 120MM
2. 35MM CARTRIDGE
3. MIXER DOME
4. WALL MIXER SLEEVE
5. GRUB SCREW M5X5
6. O-RING
7. MIXER HANDLE
8. MIXER RING
9. BACKPLATE
10. CAST SPOUT
11. SCREW CAP
12. WALL MIXER BODY
13. SCREW M3X5
14. ALLEN KEY
15. PROTECTIVE COVER



#### MAINTENANCE AND CARE:

- Chrome plated surfaces should be cleaned with mild liquid detergent or soap and water.
- Do not use cream cleaners or citrus based cleaning products, as they are abrasive.
- Use of unsuitable cleaning agents may damage the surface. Any damage caused in this way will not be covered by warranty.

#### PACKAGING INCLUDES

- 1 x Wall mixer spout 180mm
- 1 x Wall mixer back plate
- 1 x Mixer mixer handle
- 1 x Wall breach 120mm
- 1 x Protective cover
- 1 x Installation kit
- 1 x Installation instructions
- 1 x Warranty card

PLEASE [CLICK HERE TO VIEW FULL WARRANTY](#)

While we aim to ensure the specifications shown are correct at time of printing, Phoenix Tapware reserves the right to make modifications without prior notice. Always use the physical product measurements for mark-ups and roughing-in as the line drawing shown may differ from the actual product over time. All measurements are shown in millimetres.

A Registered Design and Trademark of Phoenix Industries Pty. Ltd

[www.phoenixtapware.com.au](http://www.phoenixtapware.com.au)  
03 9780 4200